



Infant formula, MEAD JOHNSON, ENFAMIL, low iron, ready-to-feed

TOTAL 12.6 2

Macronutrient profile [gr. of nutrient per 100 gr. food]



Proteins Water Sugars Fibre Alcohol Lipids Other

FIBER 0 0

Energy [kcal per 100 gr. food]

63

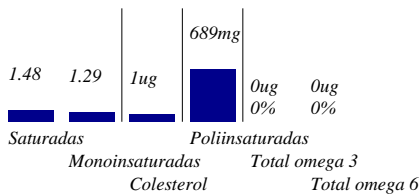
kCALs 2.7 2.4 84.2

Sugars profile [gr of sugar per 100 gr. food]

7.18 Lactose

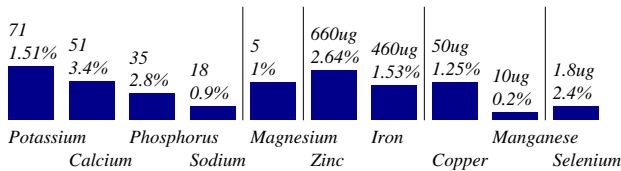
SUGAR 5.5

Main lipids profile [gr of lipid per 100 gr. food]



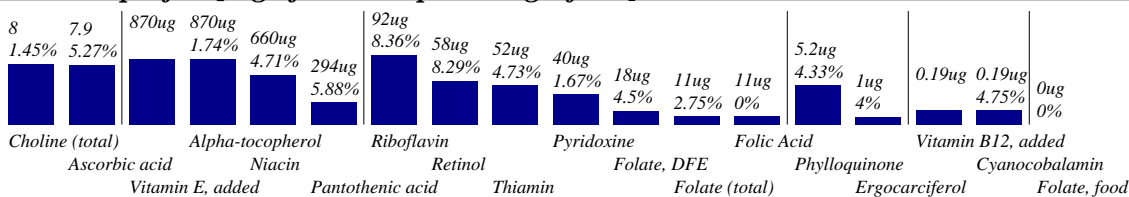
EFA 0

Mineral and oligoelements profile [mg of mineral per 100 gr. food]



MINER. 1.8

Vitamin profile [mg of vitamin per 100 gr. food]



VITAM. 3.9

Phytochemicals profile [mg of nutrient per 100 gr. food]

0ug Caroten, beta Caffeine Theobromine 0ug Luthein+zeaxanthin Cryptoxanthin, beta 0ug Caroten, alfa Lycopene